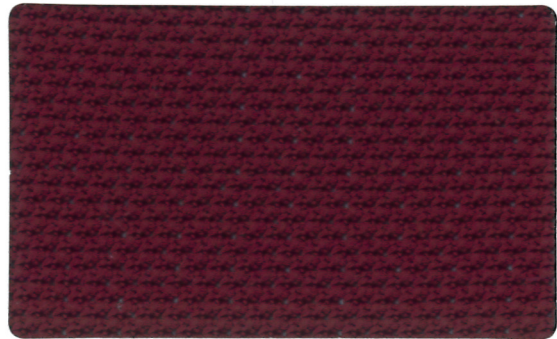
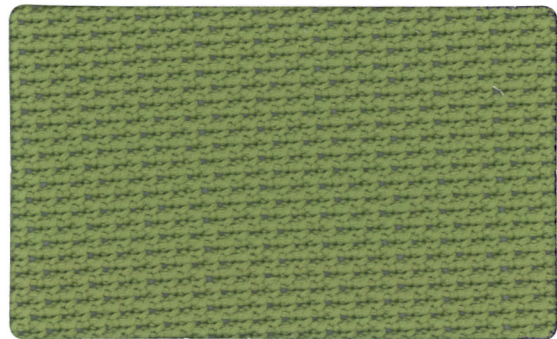




M85 schwarz



M62 dunkelrot



M34 lindgrün



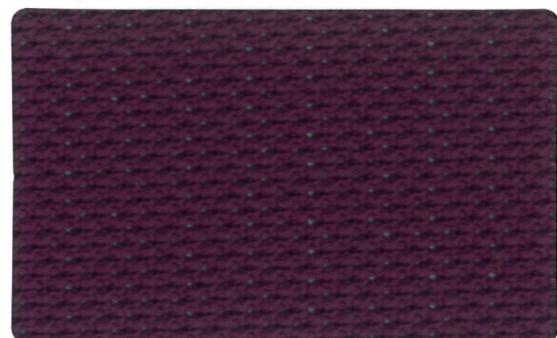
M70 hellgrau



M82 ozeanblau



M77 anthrazit



M65 lila

## D Membrangewebe

<b>Material</b>	100 % Polyamid
<b>Gewicht</b>	170 g
<b>Lichtechtheit</b>	6
<b>Reibechtheit</b>	4-5 trocken/nass
<b>Scheuerfestigkeit</b>	50.000 Martindale
<b>Feuersicherheit</b>	DIN EN 1021 - Teil 1 ( Zigarette)

## E Meshback

<b>Material</b>	100 % Polyamid
<b>Weight</b>	170 g
<b>Colour fastness</b>	6
<b>Rubbing fastness</b>	4a-5 dry/wet
<b>Abrasion resistance</b>	50.000 Martindale
<b>Flammability</b>	DIN EN 1021 - part 1

## F Dossier résille

<b>Matériau</b>	100 % Polyamid
<b>Poids</b>	170 g
<b>Résistance à la lumière</b>	6
<b>Résistance au frottement</b>	4-5 sec/humide
<b>Résistance à l'abrasion</b>	50.000 Martindale
<b>Inflammabilité</b>	DIN EN 1021 - part 1

## NL Rug met netbespanning

<b>Materiaal</b>	100 % Polyamid
<b>Gewicht</b>	170 g
<b>Kleurechtheid</b>	6
<b>Kleurechtheid bij wrijven</b>	4-5 droog/nat
<b>Slijtvastheid</b>	50.000 Martindale
<b>Brandveiligheid</b>	DIN EN 1021 - part 1

